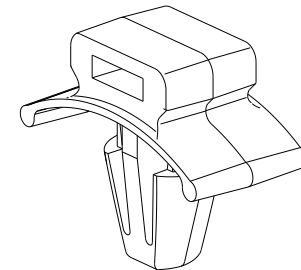
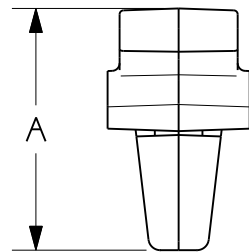
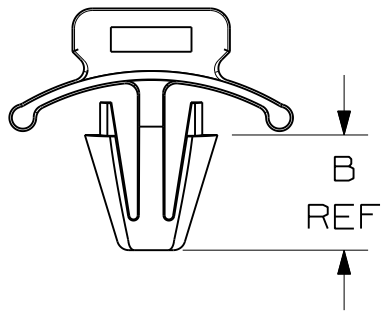
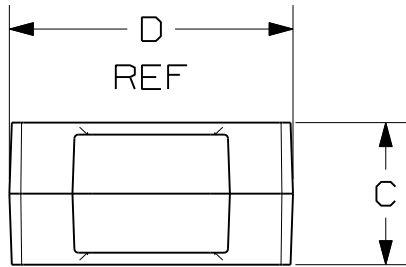


THIS COPY IS PROVIDED ON A RESTRICTED BASIS AND IS NOT TO BE USED IN ANY WAY DETRIMENTAL TO THE INTERESTS OF PANDUIT CORP.

PANDUIT PART NO.	USE WITH THESE CABLE TIE CROSS-SECTIONS	DIMENSIONS				WEIGHT lbs/100pcs (g)
		A	B	C	D	
PWMS-H25	MINIATURE INTERMEDIATE STANDARD	.62 (15.7)	.31 (8.0) REF	.37 (9.3)	.71 (18.0) REF	0.13 (60)



NOTES:

- SEE CURRENT PRICE SHEET FOR PART NUMBER SUFFIX DESIGNATION FOR PACKAGE SIZE, AND COLOR.
- (*) DIMENSIONAL VARIANCE IS POSSIBLE DUE TO MOLDING PROCESS RELATED SINK MARKS.
- APPLICATION SPECIFICATION:
HOLE DIAMETER: .229 (5.8) - .255 (6.5)
PANEL THICKNESS: .105 (2.7) (MAX)

DIMENSIONS IN BRACKETS ARE METRIC [mm]	
CAD FILENAME/LAYERS	G00239EW_PB_PWMSH25_06
PANDUIT CORP. TINLEY PARK, ILLINOIS	
PUSH WING MOUNT PWMS-H25	
UNLESS OTHERWISE SPECIFIED, DIMENSIONAL TOLERANCES ARE: (.X) ±0.05 (1.3) (.XXX) ±0.010 (0.25) (.XX) ±0.02 (0.5) ANGLES ±5°	UNLESS OTHERWISE SPECIFIED, ALL DIMENSIONS ARE GIVEN IN INCHES, THIRD ANGLE PROJECTION.
DRAWN BY CGSM	MAT'L: NYLON 6/6
DATE 3-6-97	SCALE 2:1
CHK'D	DRAWING NO. GB0239EW
	DWG A SIZE

REV	DATE	BY	CHK	DESCRIPTION	ECN	R	CUST	SUP
6	5/22/08	DJSM		TABULARIZED DIMENSIONS, REMOVED WINDOW DIMENSIONS, REVISED DIMENSION VALUES	GB0239EW	6		
R	3-6-97	CGSM		INITIAL RELEASE	GB0239EW	R		